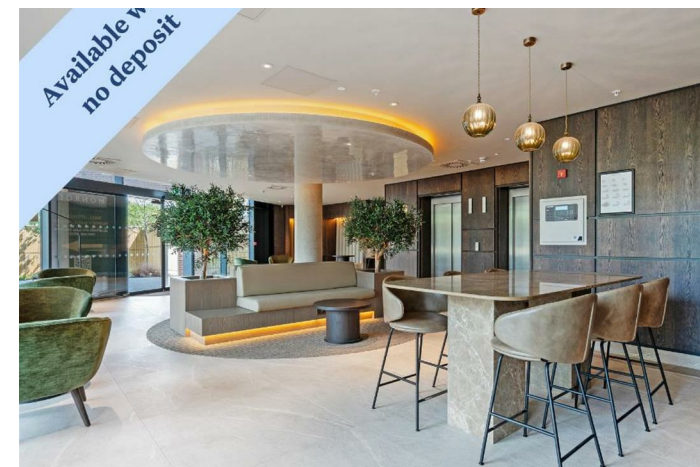


Available w
no deposit



Available w
no deposit



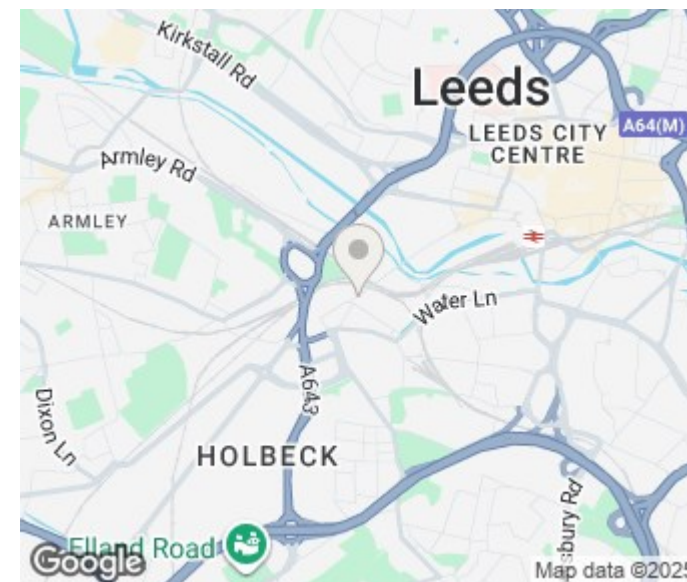
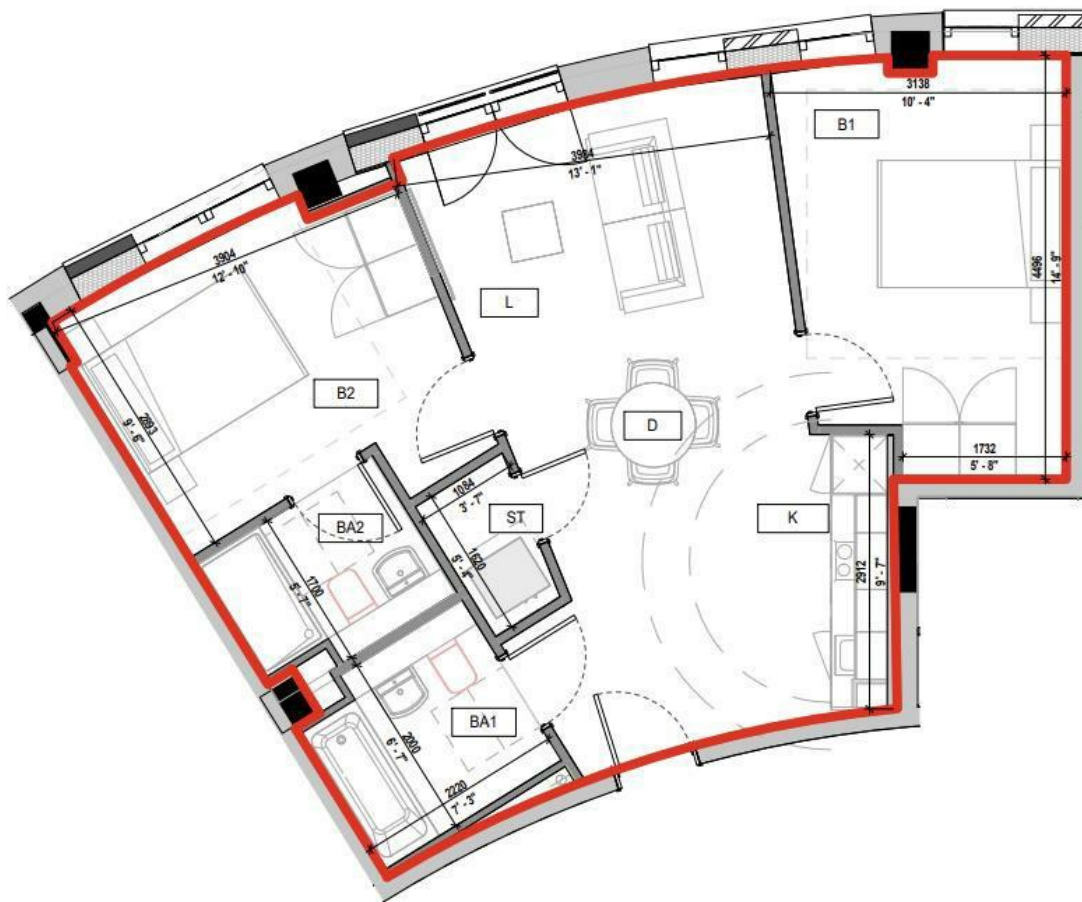
FLAT 73 SPRINGWELL GARDENS, SPRINGWELL ROAD LEEDS, LS12 1FJ

£1,300 PER MONTH

Move into brand-new luxury at Springwell Gardens - modern design, top amenities, prime location, and enjoy your first month rent-free if you move in during October 2025. Also available with a low deposit option!

MONROE

SELLERS OF THE FINEST HOMES



| Energy Efficiency Rating | | |
|---|-------------------------|-----------|
| | Current | Potential |
| Very energy efficient - lower running costs | | |
| (92 plus) A | | |
| (81-91) B | 87 | 87 |
| (69-80) C | | |
| (55-68) D | | |
| (39-54) E | | |
| (21-38) F | | |
| (1-20) G | | |
| Not energy efficient - higher running costs | | |
| England & Wales | EU Directive 2002/91/EC | |

Agents Note: Whilst every care has been taken to prepare these particulars, they are for guidance purposes only. All measurements are approximate and are for general guidance purposes only and whilst every care has been taken to ensure their accuracy, they should not be relied upon and potential buyers/tenants are advised to recheck the measurements

Monroe Lettings and Property
Management
Whitehall Road
Leeds
LS12 1FJ

0113 350 0866
hello@monroelettings.com
www.monroelettings.com

MONROE

SELLERS OF THE FINEST HOMES